

HKT50

SPECIFICATIONS

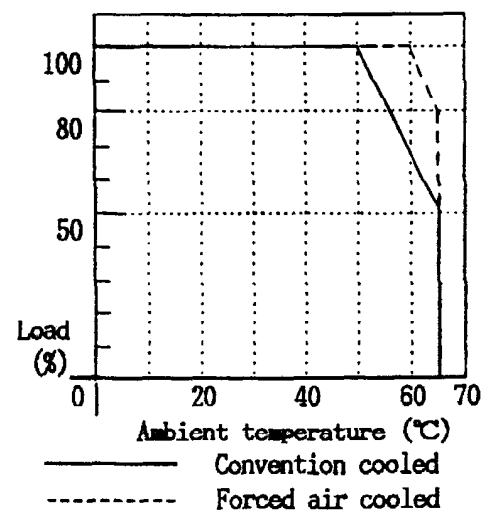
A053 - 01 - 01C

Items	Model	HKT 50 - 522			HKT 50 - 5FF			HKT 50 - 525		
		CH	V 1	V 2	V 3	V 1	V 2	V 3	V 1	V 2
1 Nominal Output Voltage	V	5	+12	-12	5	+15	-15	5	+12	-5
2 Minimum Output Current	A	0.75	0	0	0.75	0	0	0.75	0	0
3 Average Output Current	A	7	1.5	0.5	7	1.2	0.5	7	1.5	0.5
4 Peak Output Current (*1)	A	7	2	0.5	7	1.5	0.5	7	2	0.5
5 Maximum Output Power/CH	W	35	18	6	35	18	7.5	35	18	2.5
6 Maximum Output Power	W	50			50			50		
7 Efficiency (Typ) (*2)	%	72								
8 Input Voltage Range		85 - 132VAC (47 - 440Hz) or 110 - 175VDC								
9 Input Current (Typ) (*2)	A	1.2								
10 In-rush Current (Typ) (*3)		30A at 100VAC (130VDC)								
11 Output Voltage Range		V1 ... 5.0 - 5.3V ; V2, V3 ... Fixed (±5% Max)								
12 Maximum Ripple & Noise	mV	120	150	150	120	150	150	120	150	150
13 Maximum Line Regulation (*4)	mV	20	48	48	20	60	60	20	48	20
14 Maximum Load Regulation (*5)	mV	40	150	150	40	150	150	40	150	100
15 Maximum Temperature Drift(*6)	mV	50	240	240	50	300	300	50	240	100
16 Over Current Protection (*7)		105% ~								
17 Over Voltage Protection (*8)		V1 Only ... 5.7 ~ 7.0V								
18 Hold-Up Time (Typ) (*2)	ms	20								
19 Operating Temperature (*10)		0 ~ +65°C								
20 Operating Humidity		30 ~ 90% RH								
21 Storage Temperature		-30 ~ +85°C								
22 Storage Humidity		10 ~ 95% RH								
23 Cooling		Convection cooled								
24 Withstand Voltage (*9)		Input - Chassis , Input - Output ... 2.0kVAC 1min Output - Chassis ... 500VAC 1min.								
25 Isolation Resistance		More than 100MΩ at 25°C and 70% RH Output-Chassis...500VDC								
26 Vibration		Less than 19.6 m/s ²								
27 Shock		Less than 196.1 m/s ²								
28 Weight	g	420								
29 Size (W×H×D)	mm	36 × 95 × 155			Refer to Outline Drawing					

NOTES

- *1 : Operating time at peak output is less than 5 sec.
- *2 : At 100VAC & Maximum output power.
- *3 : Typical value on cold start, Ta=25°C
- *4 : From 85 ~ 132VAC or 110 ~ 175VDC, constant load.
- *5 : From Minimum load ~ Maximum load, constant input voltage.
- *6 : From 0 ~ 65°C, constant input voltage and load.
- *7 : V1 , V2 , V3 current limiting with automatic recovery.
Avoid to operate over load or dead short for a long time.
(Refer to instruction manual for details.)
- *8 : OVP circuit will shutdown all outputs, manual reset.
- *9 : Refer to instruction manual for testing procedure.
- *10: Ratings - Refer to Derating Curve on the right.
 - Load(%) is percent of maximum output power or maximum output current, whichever is greater.
 - Refer to instruction manual for further mounting details.

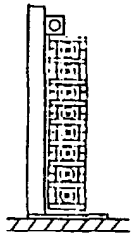
Derating curve (Vertical mounting)



HKT50 出力ディレーティング

取付方向

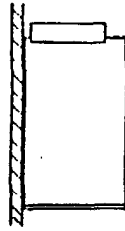
(A)標準取付



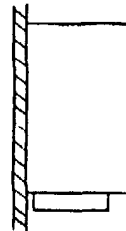
(B)



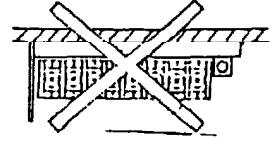
(C)



(D)



(E)



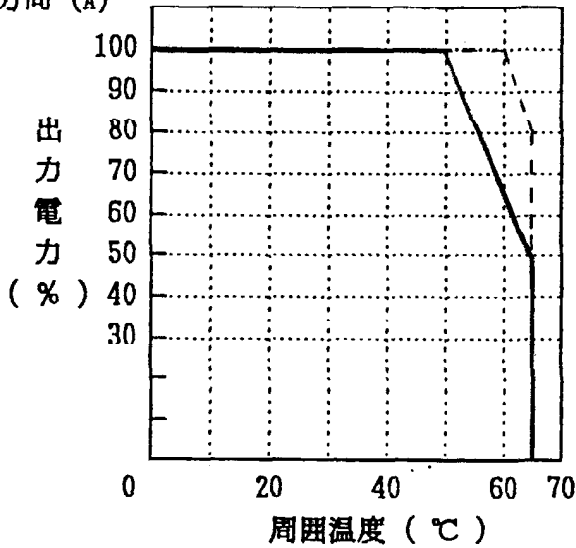
使用不可

出力ディレーティングカーブ

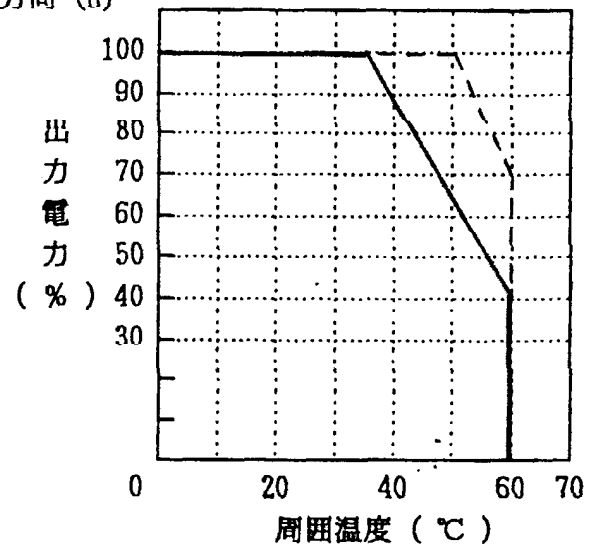
自然空冷

強制空冷

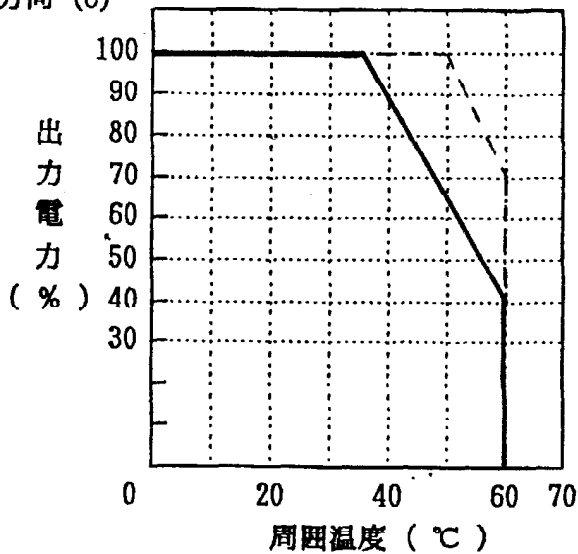
取付方向 (A)



取付方向 (B)



取付方向 (C)



取付方向 (D)

